



Date: 20/01/2012



# GC puzzle



## GEOCACHING

### PUZZLE CODES & ALPHABETS

By

dmaniatopoulos@hotmail.com **mimhs.gr**



A collection of decipher infos for  
Geocaching Puzzle hunters !

By 'mimhs.gr'

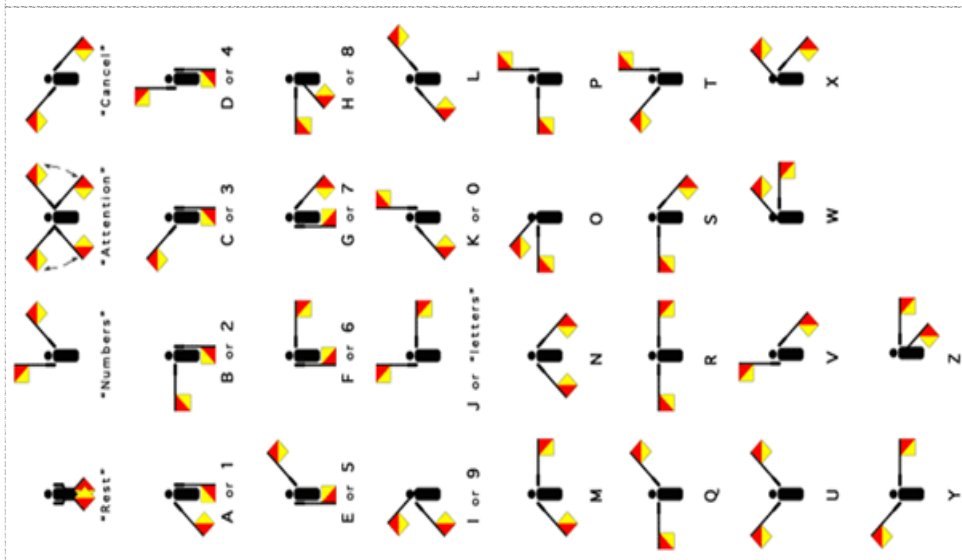
**Prime numbers 2 - 1000**

2	3	5	7	11	13	17	19	23	29	31	37	
41	43	47	53	59	61	67	71	73	79	83		
89	97	101	103	107	109	113	127	131	137			
139	149	151	157	163	167	173	179	181				
191	193	197	199	211	223	227	229	233				
239	241	251	257	263	269	271	277	281				
283	293	307	311	313	317	331	337	347				
349	353	359	367	373	379	383	389	397				
401	409	419	421	431	433	439	443	449				
457	461	463	467	479	487	491	499	503				
509	521	523	541	547	557	563	569	571				
577	587	593	599	601	607	613	617	619				
631	641	643	647	653	659	661	673	677				
683	691	701	709	719	727	733	739	743				
751	757	761	769	773	787	797	809	811				
821	823	827	829	839	853	857	859	863				
877	881	883	887	907	911	919	929	937				
941	947	953	967	971	977	983	991	997	(168			

primes)

Blank page

Semaphore Signaling



Blank page

Every geocache listed on geocaching.com has both a waypoint ID (like GC16XYD for this cache), and a numeric ID (718967 for this cache). The numeric ID isn't used for much, but you can see it by clicking on the "watch listing" button and looking at the end of the URL that results.

In the early days, waypoint IDs were simply hexadecimal (base 16) equivalents of the numeric IDs, with "GC" in front. They used the digits 0 to 9 and the letters A to F, representing the "digits" 10 to 15. For example, to find the numeric equivalent of the waypoint ID "GCCE49", just throw away the "GC" and interpret "CE49" in base 16. C=12 and E=14, so the numeric equivalent is:

$$12 * 16^3 + 14 * 16^2 + 4 * 16 + 9 = 52809 \quad ("16^3" \text{ means } 16*16*16, \text{ etc.})$$

To see that these are really the same, click on these links:

[http://www.geocaching.com/seek/cache\\_details.aspx?wp=GCCE49](http://www.geocaching.com/seek/cache_details.aspx?wp=GCCE49) [http://www.geocaching.com/seek/cache\\_details.aspx?id=52809](http://www.geocaching.com/seek/cache_details.aspx?id=52809)

Some early GPS units could only handle 6-character waypoint IDs, so this system had to be changed in April 2003, after the cache GCFFFF was created.

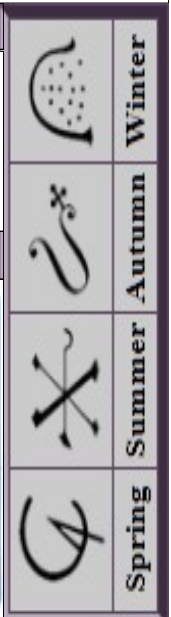
Since that time, other letters of the alphabet have also been allowed in waypoint IDs. Instead of base 16, they now use base 31. To find the numeric equivalent of a modern waypoint ID, interpret it as a number in base 31, with A=10, B=11, ..., Z=30, and subtract 411120. For example, this cache's waypoint ID is GC16XYD. Since X=28, Y=29, and D=13, the numeric equivalent is

$$1 * 31^4 + 6 * 31^3 + 28 * 31^2 + 29 * 31 + 13 - 411120 = 718967.$$

Arabic Numbers

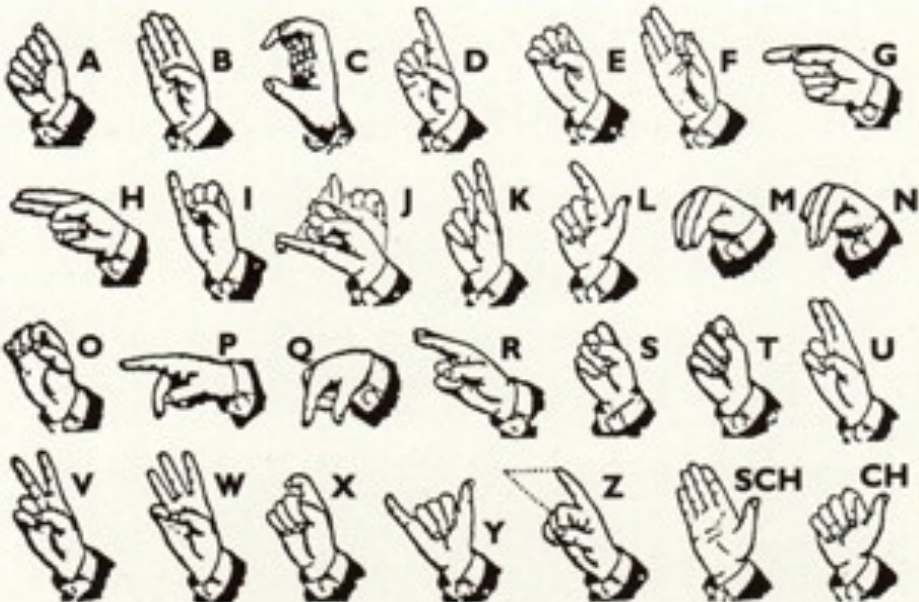
٠	١	٢	٣	٤	٥	٦	٧	٨	٩
0	1	2	3	4	5	6	7	8	9
sifr	waahid	eeth-nayn	thalaatha	arba'a	khamsa	sitta	sab'a	thamaaneeya	tis'a

IBM Punched card decode

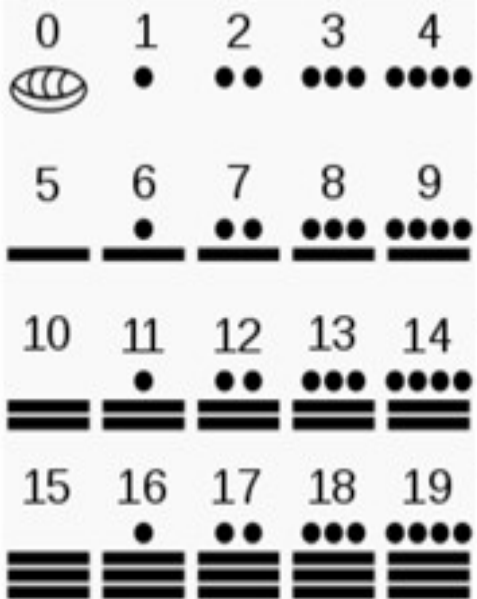




# FINGERALPHABET



# MAYA



360er	.	••	•••	••••
20er	•	•	••	•••
1er	••	•••	••••	•••••
	32	389	4645	

Dec	Hx	Oct	Char	Dec	Hx	Oct	Html	Chr	Dec	Hx	Oct	Html	Chr	Dec	Hx	Oct	Html	Chr
0	0	000	<b>NULL</b> (null)	32	20	040	&#32;	Space	64	40	100	&#64;	0	96	60	140	&#96;	.
1	1	001	<b>SOH</b> (start of heading)	33	21	041	&#33;	!	65	41	101	&#65;	A	97	61	141	&#97;	a
2	2	002	<b>STX</b> (start of text)	34	22	042	&#34;	"	66	42	102	&#66;	B	98	62	142	&#98;	b
3	3	003	<b>ETX</b> (end of text)	35	23	043	&#35;	#	67	43	103	&#67;	C	99	63	143	&#99;	c
4	4	004	<b>EOT</b> (end of transmission)	36	24	044	&#36;	\$	68	44	104	&#68;	D	100	64	144	&#100;	d
5	5	005	<b>ENO</b> (enquiry)	37	25	045	&#37;	%	69	45	105	&#69;	E	101	65	145	&#101;	e
6	6	006	<b>ACK</b> (acknowledge)	38	26	046	&#38;	&	70	46	106	&#70;	F	102	66	146	&#102;	f
7	7	007	<b>BEL</b> (bell)	39	27	047	&#39;	'	71	47	107	&#71;	G	103	67	147	&#103;	g
8	8	010	<b>BS</b> (backspace)	40	28	050	&#40;	(	72	48	110	&#72;	H	104	68	150	&#104;	h
9	9	011	<b>TAB</b> (horizontal tab)	41	29	051	&#41;	{	73	49	111	&#73;	I	105	69	151	&#105;	i
10	A	012	<b>LF</b> (ML line feed, new line)	42	2A	052	&#42;	+	74	4A	112	&#74;	J	106	6A	152	&#106;	j
11	B	013	<b>VT</b> (vertical tab)	43	2B	053	&#43;	+	75	4B	113	&#75;	K	107	6B	153	&#107;	k
12	C	014	<b>FF</b> (MP form feed, new page)	44	2C	054	&#44;	,	76	4C	114	&#76;	L	108	6C	154	&#108;	l
13	D	015	<b>CR</b> (carriage return)	45	2D	055	&#45;	-	77	4D	115	&#77;	M	109	6D	155	&#109;	m
14	E	016	<b>SO</b> (shift out)	46	2E	056	&#46;	.	78	4E	116	&#78;	N	110	6E	156	&#110;	n
15	F	017	<b>SI</b> (shift in)	47	2F	057	&#47;	/	79	4F	117	&#79;	O	111	6F	157	&#111;	o
16	10	020	<b>DLE</b> (data link escape)	48	30	060	&#48;	0	80	50	120	&#80;	P	112	70	160	&#112;	p
17	11	021	<b>DC1</b> (device control 1)	49	31	061	&#49;	1	81	51	121	&#81;	Q	113	71	161	&#113;	q
18	12	022	<b>DC2</b> (device control 2)	50	32	062	&#50;	2	82	52	122	&#82;	R	114	72	162	&#114;	r
19	13	023	<b>DC3</b> (device control 3)	51	33	063	&#51;	3	83	53	123	&#83;	S	115	73	163	&#115;	s
20	14	024	<b>DC4</b> (device control 4)	52	34	064	&#52;	4	84	54	124	&#84;	T	116	74	164	&#116;	t
21	15	025	<b>NAK</b> (negative acknowledge)	53	35	065	&#53;	5	85	55	125	&#85;	U	117	75	165	&#117;	u
22	16	026	<b>SYN</b> (synchronous idle)	54	36	066	&#54;	6	86	56	126	&#86;	V	118	76	166	&#118;	v
23	17	027	<b>ETB</b> (end of trans. block)	55	37	067	&#55;	7	87	57	127	&#87;	W	119	77	167	&#119;	w
24	18	030	<b>CAN</b> (cancel)	56	38	070	&#56;	8	88	58	130	&#88;	X	120	78	170	&#120;	x
25	19	031	<b>EM</b> (end of medium)	57	39	071	&#57;	9	89	59	131	&#89;	Y	121	79	171	&#121;	y
26	1A	032	<b>SUB</b> (substitute)	58	3A	072	&#58;	:	90	5A	132	&#90;	Z	122	7A	172	&#122;	z
27	1B	033	<b>ESC</b> (escape)	59	3B	073	&#59;	;	91	5B	133	&#91;	[	123	7B	173	&#123;	{
28	1C	034	<b>FS</b> (file separator)	60	3C	074	&#60;	<	92	5C	134	&#92;	\	124	7C	174	&#124;	
29	1D	035	<b>GS</b> (group separator)	61	3D	075	&#61;	=	93	5D	135	&#93;	]	125	7D	175	&#125;	}
30	1E	036	<b>RS</b> (record separator)	62	3E	076	&#62;	>	94	5E	136	&#94;	^	126	7E	176	&#126;	~
31	1F	037	<b>US</b> (unit separator)	63	3F	077	&#63;	?	95	5F	137	&#95;	_	127	7F	177	&#127;	DEL

Letter	NATO & International Aviation	RAF 1942-43	British Forces 1962	German WWII	Telecom B	British A or International	NY Police	French	German	Italian	Spanish
A	Alpa	Apple	Abel	Anton	Alfred	Amsterdam	Adam	Anatole	Anton	Ancona	Antonio
Ä									Ärger		
B	Bravo	Beer	Baker	Berta Bruno	Benjamin	Baltimore	Boy	Berthe	Berta	Bologna	Barcelona
C	Charlie	Charlie	Charlie	Caesar	Charles	Casablanca	Charlie	Célestin	César	Como	Carmen
Ch									Charlotte		Chocolate
D	Delta	Dog	Dog	Dora	David	Denmark	David	Désiré	Dora	Domodossola	Dolores
E	Echo	Edward	Easy	Emil	Edward	Edison	Edward	Eugène	Emil	Empoli	Enrique
É								Émile			
F	Foxtrot	Freddy	Fox	Friedrich/Fritz	Frederick	Florida	Frank	François	Friedrich	Firenze	Francia
G	Golf	George	George	Gustav	George	Gallipoli	George	Gaston	Gustav	Genova	Gerona
H	Hotel	Harry	How	Heinrich	Harry	Havana	Henry	Henri	Heinrich	Hotel	Historia
I	India	In	Item	Ida	Issac	Italia	Ida	Irma	Ida	Imola	Inés
J	Juliet	Jug/Johnny	Jig	Josef	Jack	Jerusalem	John	Joseph	Julius	I lunga	José
K	Kilo	King	King	Konrad/Kurfurst	King	Kilogram	King	Klèber	Kaufmann	Kursaal	Kilo
L	Lima	Love	Love	Ludwig	London	Liverpool	Lincoln	Louis	Ludwig	Livorno	Lorenzo
LI											Liobregat
M	Mike	Mother	Mike	Martha	Mary	Madagascar	Mary	Marcel	Martha	Milano	Madrid
N	November	Nuts	Nan	Nordpol	Nellie	New York	Nora	Nicolas	Nordpol	Napoli	Navarra
Ñ											Ñoño
O	Oscar	Orange	Oboe	Otto	Oliver	Oslo	Ocean	Oscar	Otto	Otranto	Oriado
Ö									Ökonom		
P	Papa	Peter	Peter	Paula	Peter	Paris	Peter	Pierre	Paula	Padova	Paris
Q	Quebec	Queen	Queen	Quelle	Queen	Quebec	Queen	Quintal	Quelle	Quarto	Querido
R	Romeo	Roger/Robert	Roger	Richard	Robert	Roma	Robert	Raoul	Richard	Roma	Ramón
S	Sierra	Suga	Sugar	Siegfried	Samuel	Santiago	Sam	Suzanne	Samuel	Savona	Sábado
Sch									Schule		
T	Tango	Tommy	Tare	Toni	Tommy	Tripoli	Tom	Thérèse	Theodor	Torino	Tarragona
U	Uniform	Uncle	Uncle	Ulrich	Uncle	Uppsala	Union	Ursule	Ulrich	Udine	Ulises
Ü									Übermut		
V	Victor	Vic	Victor	Viktor	Victor	Valencia	Victor	Victor	Viktor	Venezia	Valencia
W	Whisky	William	Wilham	Wilhelm	William	Washington	William	William	Wilhelm	Washington	Washington
X	X-ray	X-Ray	X-ray	Xantippe	X-ray	Xantippe	X-ray	Xavier	Xantippe	Ics	Xiquena
Y	Yankee	Yoke/Yorker	Yoke	Ypern	Yellow	Yokohama	Young	Yvonne	Ypsilon	York	Yegua
Z	Zulu	Zebra	Zebra	Zeppelin	Zebra	Zürich	Zebra	Zoé	Zeppelin	Zara	Zaragoza

## ColorTokki

Individual Case

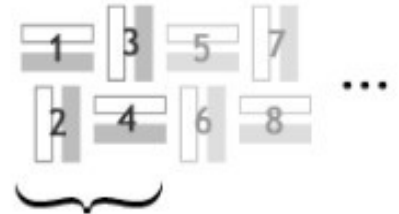
Light

Dark



Gui

Word Case



Gui Block

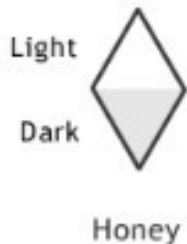
## ColorTokki Alphabet



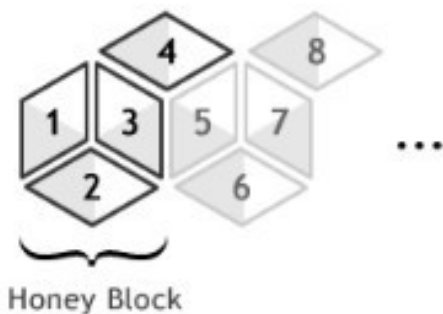
Easy Guide



Individual Case



Word Case



ColorHoney Alphabet



Easy Guide



1xx Intermediate Status	401 Unauthorized
100 Continue	404 Not Found
101 Switching Protocols	402 Payment Required
2xx Successful Response	403 Forbidden
200 OK	405 Method Not Allowed
201 Created	406 Not Acceptable
202 Accepted	407 Proxy Authentication Required
203 Non-Authoritative Information	408 Request Time-out
204 No Content	409 Conflict
205 Reset Content	410 Gone
206 Partial Content	411 Length Required
3xx Redirects	412 Precondition Failed
300 Multiple Choices	413 Request Entity Too Large
301 Moved Permanently	414 Request-URI Too Large
302 Moved Temporarily	415 Unsupported Media Type
303 See Other	416 Requested Range Not Satisfiable
304 Not Modified	417 Expectation Failed
305 Use Proxy	5xx Server Errors
306 Unused	500 Internal Server Error
307 Temporary Redirect	501 Not Implemented
4xx Request Errors	502 Bad Gateway
400 Bad Request	503 Service Unavailable
	504 Gateway Time-out
	505 HTTP Version not supported

Egyptian Hieroglyphic Alphabet

	A		B		B		C		D		E
	F		G		H		H		I		J
	K		L		M		N		N		O
	P		Q		R		S		T		T
	U		V		W		X		Y		Z

Pig-Pen cipher

*Example 1*

A	B	C	J	X	N	O	P	W	
D	E	F	K	L	Q	R	S	X	Y
G	H	I	M	T	U	V	Z		

*Example 2*

A	B	C	J	K	L	S	W		
D	E	F	M	N	O	T	U	X	Y
G	H	I	P	Q	R	V	Z		

*Example 3*

A	C	E	B	D	F	S	T		
G	I	K	H	J	L	U	W	V	X
M	O	Q	N	P	R	Y	Z		

Periodic Table of the Elements

© www.elementsdatabase.com

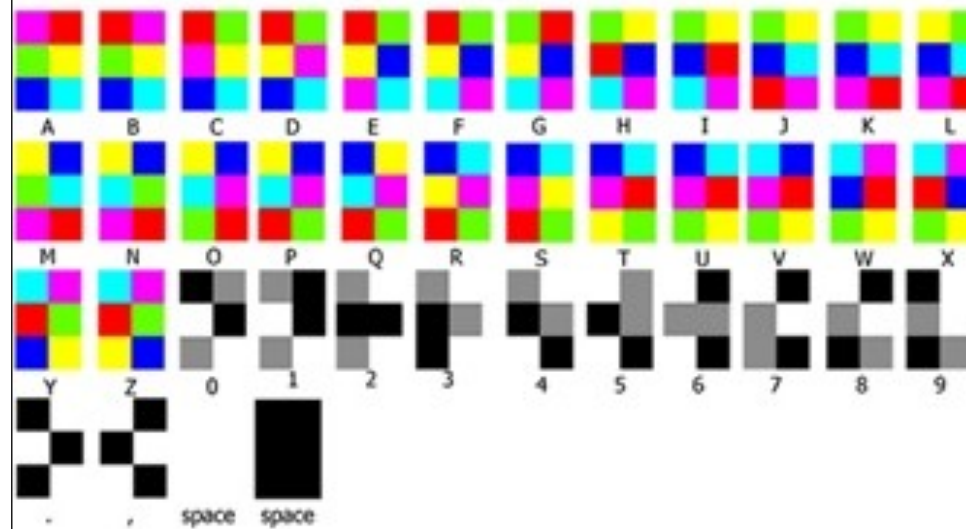
■ hydrogen  
■ alkali metals  
■ alkali earth metals  
■ transition metals  
■ poor metals  
■ nonmetals  
■ noble gases  
■ rare earth metals

1 H	2 He																
3 Li	4 Be											5 B	6 C	7 N	8 O	9 F	10 Ne
11 Na	12 Mg											13 Al	14 Si	15 P	16 S	17 Cl	18 Ar
19 K	20 Ca	21 Sc	22 Ti	23 V	24 Cr	25 Mn	26 Fe	27 Co	28 Ni	29 Cu	30 Zn	31 Ga	32 Ge	33 As	34 Se	35 Br	36 Kr
37 Rb	38 Sr	39 Y	40 Zr	41 Nb	42 Mo	43 Tc	44 Ru	45 Rh	46 Pd	47 Ag	48 Cd	49 In	50 Sn	51 Sb	52 Te	53 I	54 Xe
55 Cs	56 Ba	57 La	58 Ce	59 Pr	60 Nd	61 Pm	62 Sm	63 Eu	64 Gd	65 Tb	66 Dy	67 Ho	68 Er	69 Tm	70 Yb	71 Lu	
87 Fr	88 Ra	89 Ac	90 Th	91 Pa	92 U	93 Np	94 Pu	95 Am	96 Cm	97 Bk	98 Cf	99 Es	100 Fm	101 Md	102 No	103 Lr	

# FARB-CODE



# HEXAHUE





## Κωδικοί γλώσσας HTML pg4

**<sup> superscripted text </sup>**

Πχ. <sup>Superscripted</sup>

### Εισαγωγή σχολίου :

<! -- This is a comment -->

Δεν εμφανίζεται στην ιστοσελίδα. Καθαρά για να βοηθηθεί ο σχεδιαστής στην αναγνώριση τμημάτων, της διαμόρφωσής της.

### Πακέτο κώδικα για την εμφάνιση των ελληνικών link.

```
<br /><br /> <b><u><font color="#FF0000">!!! ΧΡΗΣΙΜΑ ΚΑΙ ΕΛΛΗΝΙΚΑ !!!</font></u> </b>
<ul>
<li><a href="http://www.geocaching-gr.com" rel="nofollow" target="_blank">Η Ελληνική ιστοσελίδα του Geocaching (Μόνο Ελληνικά)</a></li>
<li><a href="http://forums.Groundspeak.com/GC/index.php?showforum=45" rel="nofollow" target="_blank">Το Ελληνικό forum για το Geocaching (Ελάτε να τα πούμε)</a></li></ul>
```

### Για έντονους & υπογραμμισμένους χαρακτήρες:

<u><strong> History </strong></u>

### Εικόνα στην αριστερή μεριά του κειμένου:

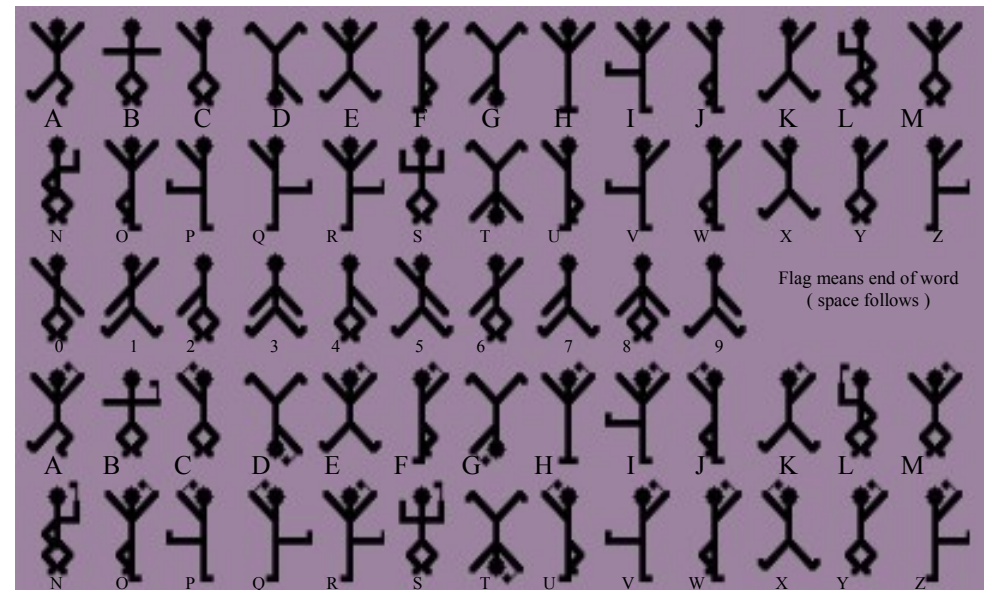
<br />

### Για χαρακτήρες χρώματος μπλε σε κίτρινο φόντο:

<h3 style="color:blue;"><span style="background-color:yellow;"><u>ΕΛΛΗΝΙΚΑ</u></span></h3>

Letter	Name	Meaning	English Analogue	Letter	Name	Meaning	English Analogue
ƒ	Fehu	Wealth	F	ᚷ	Eihwaz	Yew Tree	EI
ᚱ	Uruz	Aurochs	U	ᚫ	Perth	Luck or Fruit	P
ᚦ	Thurisaz	Giant	TH	ᚱ	Algiz	Sedge or Protection	Z
ᚦ	Ansuz	God	A	ᚱ	Sowulo	Sun	S
ᚱ	Raido	Riding	R	ᚱ	Teiwaz	The God Tyr	T
ᚫ	Kaunaz	Ulcer	K	ᚮ	Berkana	Birch Twig	B
ᚨ	Gebo	Gift	G	ᚱ	Ehwaz	Horse	E
ᚱ	Wunjo	Joy	W	ᚱ	Mannaz	Man	M
ᚱ	Hagalaz	Hail	H	ᚱ	Laguz	Water	L
ᚱ	Nauthiz	Need or Hardship	N	ᚱ	Inguz	The God Ing	NG
ᚱ	Isa	Ice	I	ᚱ	Dagaz	Day	D
ᚱ	Jera	Year or Harvest	Y	ᚱ	Othila	Inheritance	O

Dancing Man Code ( Sherlock Holmes code )



	ROT13	Vocal	Morse	B <sup>10</sup>	B <sup>9</sup>	B <sup>8</sup>	B <sup>7</sup>	B <sup>6</sup>	ASCII	Baudot Msb left	Baudot Msb right	Baudot Figure
A	N	Alpha	.-	1	1	1	1	1	65	00011	11000	-
B	O	Bravo	-... .	2	2	2	2	2	66	11001	10011	?
C	P	Charlie	-.-.-	3	3	3	3	3	67	01110	01110	:
D	Q	Delta	-... .	4	4	4	4	4	68	01001	10010	\$
E	R	Echo	. .	5	5	5	5	5	69	00001	00001	3
F	S	Foxtrot	.-.-.-	6	6	6	6	10	70	01101	10110	!
G	T	Golf	-.-.-	7	7	7	10	11	71	11010	01011	&
H	U	Hotel	....	8	8	10	11	12	72	10100	00101	#
I	V	India	. .	9	10	11	12	13	73	00110	01100	8
J	W	Juliet	.-.-.-	10	11	12	13	14	74	01011	11010	'
K	X	Kilo	-.-.-	11	12	13	14	15	75	01111	11110	(
L	Y	Lima	.-... .	12	13	14	15	20	76	10010	01001	)
M	Z	Mike	-.-	13	14	15	16	21	77	11100	00111	.
N	A	November	-.-	14	15	16	20	22	78	01100	00110	,
O	B	Oscar	-.-.-	15	16	17	21	23	79	11000	00011	9

## Κωδικοί γλώσσας HTML pg3

**<br /> για line feed.**

Αλλαγή γραμμής δηλαδή, σαν το Enter στο τέλος μιας φράσης στο notepad ή το MSWord.

Δεν χρειάζεται χαρακτήρες τέλους.

**<b> Bold χαρακτήρες ( παχείς ).**

\* Στο τέλος της λέξης ή φράσης κλείνουμε με </b>

**Scrolling ??????? Εδώ δεν είμαι σίγουρος ότι τα λέω καλά !!**

Α' τρόπος:

```
<p align="justify">
<marquee behavior="alternate" scrollamount="2" scrolldelay="10">

</marquee>
</p>
```

Β' τρόπος:

```
<div class="UserSuppliedContent">
<span id="ctl00_ContentBody_ShortDescription">
<marquee bgcolor="#FFFFFF" loop="-2" scrollamount="5" width="100%">
<font size="5">
<font color="red">
The Cache is Obviously not at posted Coords. Everything you need to Solve the Puzzle
and get the Correct Coordinates is on this Page
</font>
</font>
</marquee>
```

**<s> scrap </s> γράμματα με γραμμή στην μέση.**

Πχ : Άκυρο

**<i> Italian </i>**

Πχ : Ιταλικοί χαρακτήρες

**<sub> subscripted text </sub>**





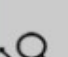

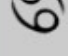
Πχ : Γεοκρόπτη



Alphabet Flags

 A (Alpha)	 H (Hotel)	 O (Oscar)	 V (Victor)
 B (Bravo)	 I (India)	 P (Papa)	 W (Whiskey)
 C (Charlie)	 J (Juliet)	 Q (Quebec)	 X (X-ray)
 D (Delta)	 K (Kilo)	 R (Romeo)	 Y (Yankee)
 E (Echo)	 L (Lima)	 S (Sierra)	 Z (Zulu)
 F (Foxtrot)	 M (Mike)	 T (Tango)	
 G (Golf)	 N (November)	 U (Uniform)	





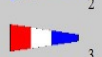





Alchemy time symbols

	Year
	Month
	Week
	Night
	Day and Night
	Day
	Hour

NATO Numeric Flags

 0 (zero)	 5
 1	 6
 2	 7
 3	 8
 4	 9

Numeric Pennants

 0 (zero)	 5
 1	 6
 2	 7
 3	 8
 4	 9

Ogham or Celtic Tree Alphabet

Character	Name	Meaning	English Analogue	Character	Name	Meaning	English Analogue
┆	Beth	Birch	B		Spas	Space	
┆┆	Luis	Rowan	L	+	Ailm	Fir	A
┆┆┆	Fearn	Alder	F	⊕	Omn	Furze	O
┆┆┆┆	Saille	Willow	S	⊖	U̇r	Heath	U
┆┆┆┆┆	Ntun	Ash	N	⊕⊖	Eadhadh	White Poplar	E
┆┆┆┆┆┆	Uath	White-Thorn	H	⊕⊕	Iodhadh	Yew	I
┆┆┆┆┆┆┆	Duir	Oak	D	⊕⊕⊖	Eabhadh	?	EA
┆┆┆┆┆┆┆┆	Tinne	Holly	T	◊	Oir	Gold	OI
┆┆┆┆┆┆┆┆┆	Coll	Hazel	C	┆┆┆	Uilleann	Elbow	UI
┆┆┆┆┆┆┆┆┆┆	Ceirt	Apple	Q	⊗	Iphin	Pine	IA
┆┆┆┆┆┆┆┆┆┆┆	Muin	Vine	M	⊕⊕⊕	Eamhancholl	Double c	AE
┆┆┆┆┆┆┆┆┆┆┆┆	Gort	Ivy	G	┆┆┆┆	Parth	Soft Birch	P
┆┆┆┆┆┆┆┆┆┆┆┆┆	nGatal	Broom or Fern	NG	┆┆┆┆┆	Eite	Feather	(Sentence start)
┆┆┆┆┆┆┆┆┆┆┆┆┆┆	Straif	Blackthorn	Z (as)	┆┆┆┆┆┆	Eite Thusthail	Reversed Feather	(Sentence end)
┆┆┆┆┆┆┆┆┆┆┆┆┆┆┆	Ruis	Elder	R				

**Κωδικοί γλώσσας HTML**

**για χρήση σε σελίδες Γεωκρυπτών V 1.1 pg1**

Ένας τρόπος για να γράψω επικεφαλίδα 'short description'.

```
<center><span lang="EN-GB" style="font-size:14.0pt;letter-spacing:-.35pt;mso-ansi-language:EN-GB;"><font color="olive"><b>ΤΟ ΑΓΑΛΜΑ <br />
Η ΠΕΡΙΠΙΤΕΤΙΑ <br />
THE STATUE </b></font></span> <font color="olive"><b><br />
<span lang="EN-GB" style="font-size:14.0pt;mso-ansi-language:EN-GB;">THE AD-
VENTURE </span></b></font></center>
```

**Κείμενο στο short description ,στο κέντρο, χαρακτήρες μέγεθος 3, χρώμα λαδί, έντονοι, Ελληνικά-Αγγλικά**

```
<center><b><font size="3" color="olive">Ρωμαϊκο Υδραγωγείο Μόριας I <br />
Roman aqueduct of Moria </font></b></center>
```

**Εισαγωγή εικόνας σαν Background του κειμένου, στοίχιση στο κέντρο.**

```
<div align="center">
<table width="100%" background="http://img.geocaching.com/cache/large/53105133-
c1c0-4fa2-ab06-5b8f4447eb9a.jpg">
<tr>
<td colspan="4" align="left">
```

\* το table width="100%" αφορά το πλάτος που θα εμφανίζεται το κείμενο. Αν παραληφτεί τότε πρέπει να γράψετε <Table background="http://img.geocaching.com/cache/large/53105133-c1c0-4fa2-ab06-5b8f4447eb9a.jpg">  
\*\* Το link (?) "http://img.geocaching.com/cache/large/53105133-c1c0-4fa2-ab06-5b8f4447eb9a.jpg" πρέπει να αλλάξει με αντίστοιχο μιας δικής σας εικόνας ,που ήδη θα έχετε ανεβάσει σε αυτή ή όμοια ιστοσελίδα σας στην Groundspeak.  
\*\*\* Κλείνουμε με </table> .Αν δεν το κάνουμε το κάνει μόνο του το site αλλά μεγαλώνει το μήκος του κειμένου και το χάος!

**Εισαγωγή εικόνας στο κείμενο.**

```
<img /><br />
```

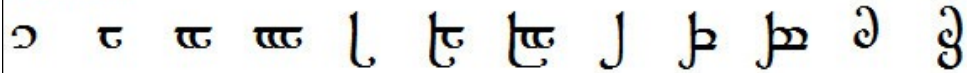
\* για το link της εικόνας ισχύει ότι και παραπάνω.

**Μπλε ελληνικοί χαρακτήρες, έντονοι, κανονικό μέγεθος, στο κέντρο.**

```
<center><b><font color="blue">Ελληνικά </font></b></center><br />
```

# Tengwar numerals

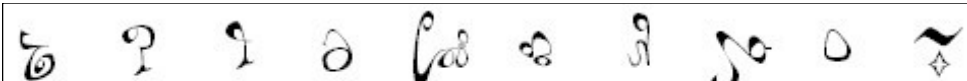
## Numerals



0 1 2 3 4 5 6 7 8 9 10 11

Tengwar numerals are written from right to left.

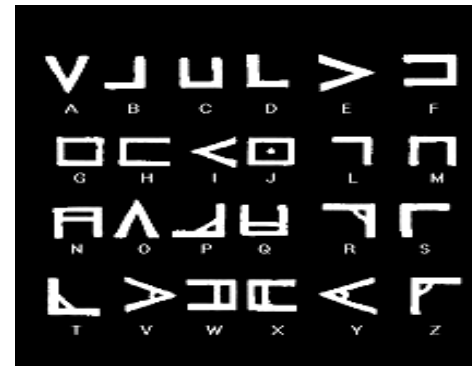
## Tekumel numerals



9 8 7 6 5 4 3 2 1 0

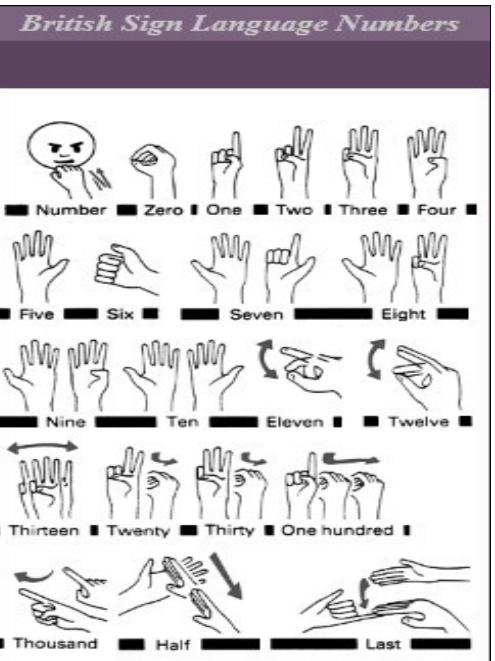
BAR CODE 39 : white(narrow), White(wide), nero(narrow), Nero(wide)

Char	Format	Char	Format	Char	Format	Char	Format
*	NwNnWnWnN	3	WnWwNnNnN	E	WnNnWwNnN	P	NnWnWnNwN
-	NwNnNnWnW	4	NnNwWnNnW	F	NnWnWwNnN	Q	NnNnNnWwW
S	NwNwNwNnN	5	WnNwWnNnN	G	NnNnNwWnW	R	WnNnNnWwN
%	NnNwNwNnN	6	NnWwWnNnN	H	WnNnNwWnN	S	NnWnNnWwN
(space)	NwWnNnWnN	7	NnNwNnWnW	I	NnWnNwWnN	T	NnNnWnWwN
.	WwNnNnWnN	8	WnNwNnWnN	J	NnNnWwWnN	U	WwNnNnNnW
/	NwNwNnNwN	9	NnWwNnWnN	K	WnNnNnNwW	V	NwWnNnNnW
+	NwNnNwNwN	A	WnNnNwNnW	L	NnWnNnNwW	W	WwWnNnNnN
0	NnNwWnWnN	B	NnWnNwNnW	M	WnWnNnNwN	X	NwNnWnNnW
1	WnNwNnNnW	C	WnWnNwNnN	N	NnNnWnNwW	Y	WwNnWnNnN
2	NnWwNnNnW	D	NnNnWwNnW	O	WnNnWnNwN	Z	NwWnWnNnN



### Lexarithm

A=1	H=8	Ξ=60	Υ=400
B=2	Θ=9	Ο=70	Φ=500
Γ=3	Ι=10	Π=80	Χ=600
Δ=4	Κ=20	,=90	Ψ=700
E=5	Λ=30	P=100	Ω=800
ς=6	M=40	Σ=200	_ =900
Z=7	N=50	T=300	



Char.	Pattern	Bars	Spaces	Char.	Pattern	Bars	Spaces
1	█	10001	0100	M	█	11000	0001
2	█	11000	0100	H	█	00101	0001
3	█	11000	0100	O	█	10100	0001
4	█	00101	0100	P	█	01100	0001
5	█	10100	0100	Q	█	00011	0001
6	█	01100	0100	R	█	00010	0001
7	█	00011	0100	S	█	00010	0001
8	█	10010	0100	T	█	00110	0001
9	█	00110	0100	U	█	10001	0000
A	█	00110	0100	V	█	01001	0000
B	█	10001	0010	W	█	11000	0000
C	█	11000	0010	X	█	00101	0000
D	█	00101	0010	Y	█	10100	0000
E	█	10100	0010	Z	█	01100	0000
F	█	01100	0010	Space	█	00011	0000
G	█	00011	0010	*	█	10010	0000
H	█	10010	0010	/	█	00110	0000
I	█	01010	0010	%	█	00000	1110
J	█	00110	0010		█	00000	1101
K	█	10001	0001		█	00000	1011
L	█	01001	0001		█	00000	0111

Α	Γ	Ι	Σ
Β	Δ	Λ	Τ
Β	Ε	Μ	Α
Δ	Θ	Ν	Α
Τ	Ε	Ο	Γ
Ζ	Φ	Ρ	Τ
Θ	Γ	Q	Ρ
Η	Ε	R	

m	//	z	9
l	π	y	8
k	δ	x	7
j		w	
i	ι	v	
h	∞	u	C
g	θ	t	ε
f	□	s	Δ
e	α	r	f
d	#	q	M
c	∧	p	S
b	#	o	∇
a	○	n	φ

Cipher Alphabet of Mary Queen of Scots

### Learn Unitology!

Unitology symbols for letters A through Z and punctuation (SS, TH, DBL LTR, QUESTION MARK, EXCLAMATION POINT).

## Alchemy codes

	Alcohol		Fumes		Potash
	Alkali		Ginger		Powder
	Alum		Gold Foil		Quicksilver (Mercury)
	Ammonia		Gold Litharge (Lead Monoxide)		Rocksalt
	Aqua		Gold Saffron		Rosin
	Red Arsenic (Realgar)		Gold Trinkbar (N.B A drink containing gold)		Salt
	White Arsenic (Arsenic Trioxide)		Gravel		Saltpeter
	Arsenic Sulfur		Haematite (Hematite)		Sea Salt
	Yellow Arsenic (Orpiment)		Honey		Silicon (Modern alchemy only)
	Beeswax		Iron Filings		Silver Spirit
	Borax		Iron Rust		Skull
	Brass		Iron Vitriol (Melanterite)		Soapstone
	Brimstone (Sulphur, Sulfur)		Lapis Lazuli		Soot
	Burned Alum		Red Lead (Lead Tetroxide) (Triplumbic Tetroxide)		Spirit
	Burned Hathorn		Lime		Spirit of Mercury
	Calced Gold		Lye		Spirit of Tin
	Chalk		Magnesia		Sugar
	Cinder		Manure		Tartar (Tartaric acid)?
	Clay		Nitre Flower		Torrefaction of Silver
	Copper Acetate		Nitre Oil		Urine
	Corpuscle		Nitric Acid (Aqua Fortis)		Verdigris
	Cribbled Ashes		Oil (Oleum)		Vinegar
	Crystal		Oil Essence		Vitriol
	Distilled Vinegar		Oil of Vitriol (Sulphuric Acid)		Wax
	Eggshells		Pewter		Wood

A	B	C	D	E	F	G	H	I	J	K	L	M
a	b	c	d	e	f	g	h	i	j	k	l	m
N	O	P	Q	R	S	T	U	V	W	X	Y	Z
n	o	p	q	r	s	t	u	v	w	x	y	z
0	1	2	3	4	5	6	7	8	9			

### Uruk Runes

**A E I O U**  
**F M I A N**

**B D F G H J(y) K L M N P R S T V W Z TH SH**  
**B D F G H J(y) K L M N P R S T V W Z TH SH**

### Tuvaluan numbers

0	leai			30	tolu sefulu
1	tasi	11	sefulu tasi	40	fá sefulu
2	lua	12	sefulu lua	50	lima sefulu
3	tolu	13	sefulu tolu	60	ono sefulu
4	fá	14	sefulu fá	70	fitu sefulu
5	lima	15	sefulu lima	80	valu sefulu
6	ono	16	sefulu ono	90	iva sefulu
7	fitu	17	sefulu fitu	100	selau
8	valu	18	sefulu valu	1,000	afe
9	iva	19	sefulu iva	10,000	sefulu afe
10	sefulu	20	lua sefulu	1 million	miliona

	Cumbria			Yorkshire		
	Millom	Keswick	Kirkby Lonsdale	North Riding	Swaledale	Wensleydale
1	aina	yan	yaan	arn	yahn	yan
2	peina	tyan	tyaan	tarn	tayhn	tean
3	para	tethera	taed'ere	tethera	tether	tither
4	pedera	methera	mead'ere	fethera	mether	mither
5	pump	pimp	mimp	pubs	mimph	pip
6	ithy	sethera	haites	aayther	hither	teaser
7	mithy	lethera	saites	layather	lither	leaser
8	owera	hovera	haoves	quoather	anver	catra
9	lavera	dovera	daoves	quaaather	danver	horna

### Sarati alphabet

#### Consonants

	t [t]		j [dʒ]		dh [ð]		ng [ŋ]		st [st]
	p [p]		g [g]		v [v]		r [r]		h [h]
	ch [tʃ]		th [θ]		zh [ʒ]		l [l]		u [ʊ]
	k [k]		f [f]		gh [ɣ]		s [s]		i [i]
	d [d]		sh [ʃ]		n [n]		s [s]		w [w]
	b [b]		x [x]		m [m]		z [z]		

#### Vowel diacritics

a	e	i	o	u	æ	ə

#### Sample text



### The Passing the River / Passage du Fleuve alphabet

a	b	c	d	g	h	j	k	l
m	n	p	r	s	t	v	z	th

### Alchemy Elements

	Aluminium
	Cobalt
	Copper
	Iron
	Lead
	Mercury
	Nickel
	Silver
	Steel
	Tin
	Antimony
	Arsenic
	Bismuth
	Boron
	Magnesium
	Phosphorus
	Platinum
	Potassium
	Stone
	Sulphur (Sulfur)
	Zinc

Page	Alchemy codes for Sun and Planets									
										SUN

### American Sign Letters


D  
 F  
 Z  
 X  
 Y  
 W  
 V  
 U  
 T  
 T  
 R  
 O  
 M  
 L  
 I  
 G  
 E  
 C  
 B  
 A

### Visitor alphabet (1984 version)


### Visitor alphabet (2009 version)

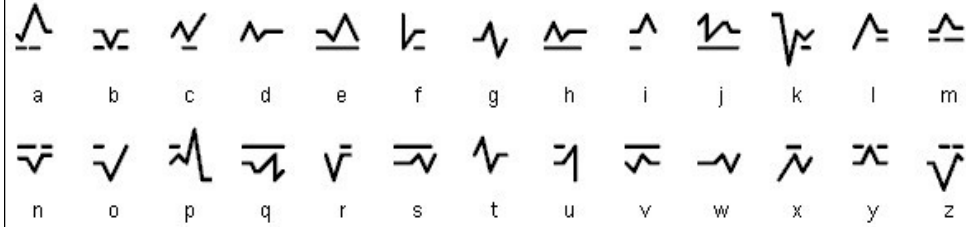

### Matoran alphabet


### Numerals

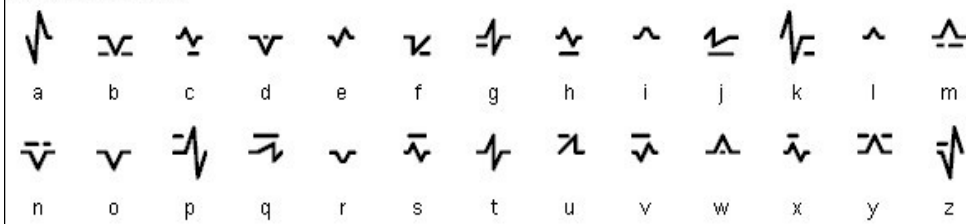
--	--	--	--	--	--	--	--	--	--



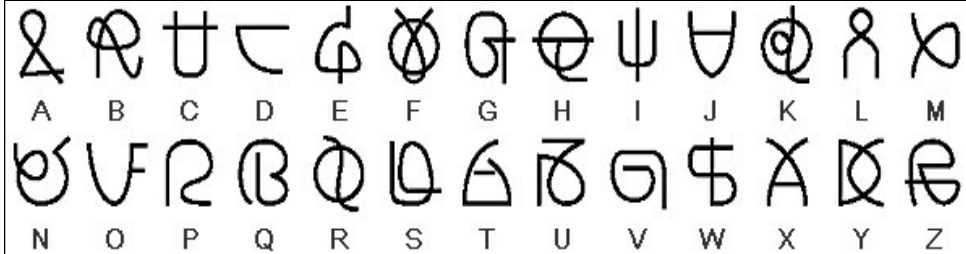
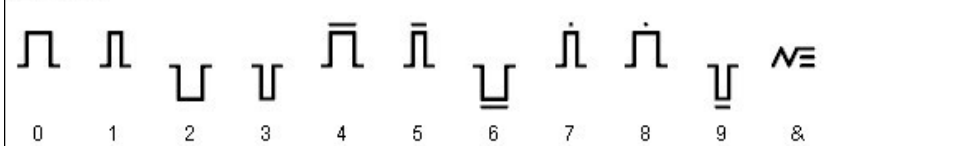

Printed alphabet



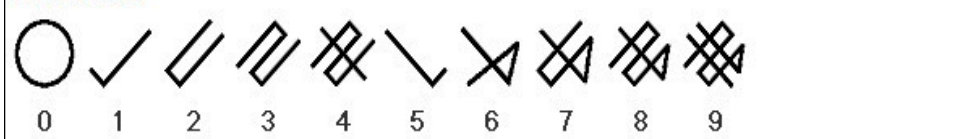
Cursive alphabet



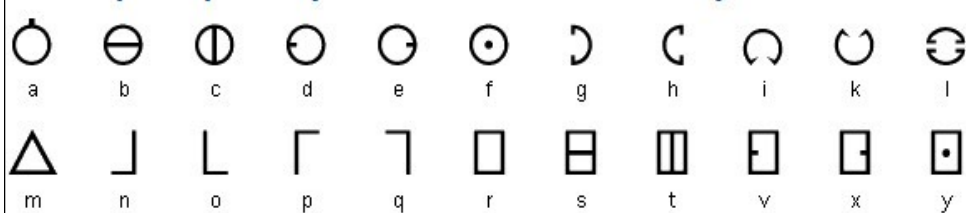
Numerals



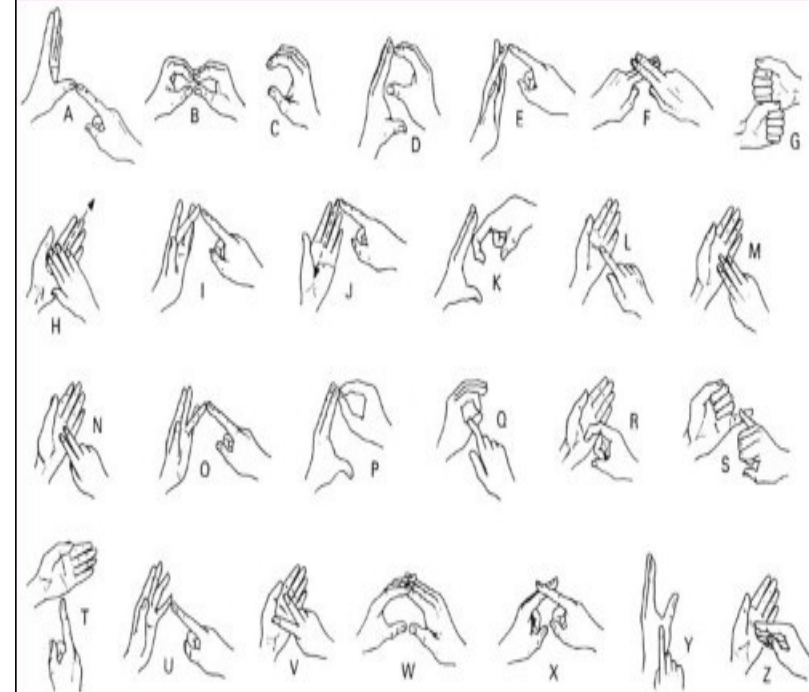
Numerals



The Utopian alphabet (VTOPIENSIVM ALPHABETVM)



British Sign Language Alphabet



Symbol by Birth Month

Birth Month	Modern Birthstones	Traditional Ancient Birthstones				Birth Flower (Main in Bold)
		Roman	Hebrew	Arabic	Hindu	
January	Garnet	Garnet	Garnet	Garnet	Ruby	<b>Carnation</b> , Snowdrop
February	Amethyst	Amethyst	Amethyst	Amethyst	Topaz	<b>Violet</b> , Iris
March	Bloodstone, Aquamarine	Bloodstone	Bloodstone	Bloodstone	Opal	<b>Daffodil</b> , Jonquil
April	Diamond	Sapphire	Sapphire	Sapphire	Diamond	<b>Daisy</b> , Sweet Pea
May	Emerald	Agate	Agate	Emerald	Emerald	<b>Lily of the Valley</b>
June	Moonstone, Pearl	Emerald	Emerald	Agate	Pearl	<b>Rose</b> , Honeysuckle
July	Ruby	Onyx	Onyx	Carnelian	Sapphire	<b>Larkspur</b> , Tulip, Water Lily
August	Peridot	Carnelian	Carnelian	Sardonyx	Ruby	<b>Gladiolus</b> , Poppy
September	Sapphire	Peridot	Peridot	Peridot	Zircon	<b>Aster</b> , Morning Glory
October	Tourmaline, Opal	Aquamarine	Aquamarine	Aquamarine	Coral	<b>Calendula</b> , Marigold, Cosmos
November	Citrine, Yellow Topaz	Yellow Topaz	Yellow Topaz	Yellow Topaz	Cats-eye	<b>Chrysanthemum</b>
December	Blue Topaz, Turquoise, Lapiz Lazuli	Ruby	Ruby	Ruby	Topaz	<b>Holly</b> , <b>Poinsettia</b> , Narcissus, Orchid



Calculator Number/ Letters  
 1 2 3 4 5 6 7 8 9 0  
 i z e h s g l b o  
 I Z E H S L B G O

Arabic letters

Letter	Sound	Name	Letter	Sound	Name
ا	[a]	alif	ض	[D]	DaaD
ب	[b]	ba	ط	[T]	Ta
ت	[t]	ta	ظ	[TH]	THa
ث	[th]	tha	ع	[']	'ayn
ج	[j]	jiim	غ	[gh]	ghayn
ح	[H]	Ha	ف	[f]	fa
خ	[kh]	kha	ق	[q]	qaaf
د	[d]	daal	ك	[k]	kaaf
ذ	[dh]	dhaal	ل	[l]	laam
ر	[r]	ra	م	[m]	miim
ز	[z]	zaay or zayn	ن	[n]	nuun
س	[s]	siin	ه	[h]	haa
ش	[sh]	shiin	و	[w]	waaw
ص	[S]	Saad	ي	[y]	ya

〇	0	zero, maru	
一	1	ichi	hitotsu
二	2	ni	futatsu
三	3	san	mittsu
四	4	shi, yon	yottsu
五	5	go	itsutsu
六	6	roku	muttsu
七	7	shichi	nanatsu
八	8	hachi	yattsu
九	9	kyuu	kokonotsu
十	10	juu	too

Japanese Numbers

百	100	hyaku	
千	1,000	sen	
万	10,000	man	
億	100,000,000	oku	

Examples:

四十九	49	(yonjuukyuu)
一百一十二	112	(ippyakujuuni)
千三百八十六	1,386	(sansenbyakuhachi juuroku)

	w		l		n		r
	uh		tch		ee		th
	m		k		g		
	h		oh		ng		
	d		b		z		
	ah		ch*		eh		
	p		f		je		
	s		ay		sh		
	t		v		y		
	ih		ll*		oo		

\* 'ch' as in Scottish 'loch'  
 'll' as in Welsh

The Alphabet of the Magi

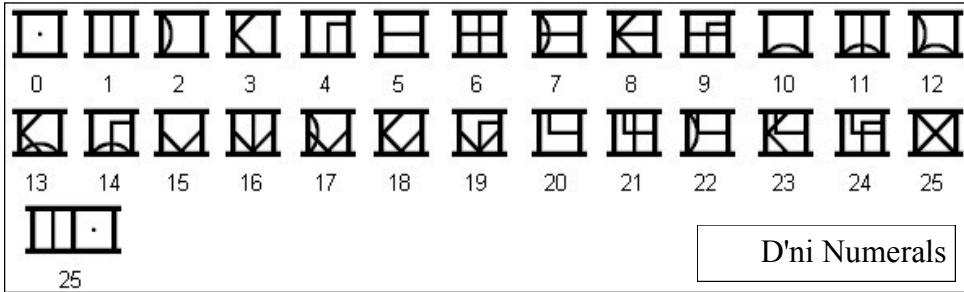
	c		l, j, y		th		h		z		u, v		e		d		g		b		a
	t		s		r		k, q		ts		f, p, ph		o		x		n		m		l

Kryptonian transliteration alphabet

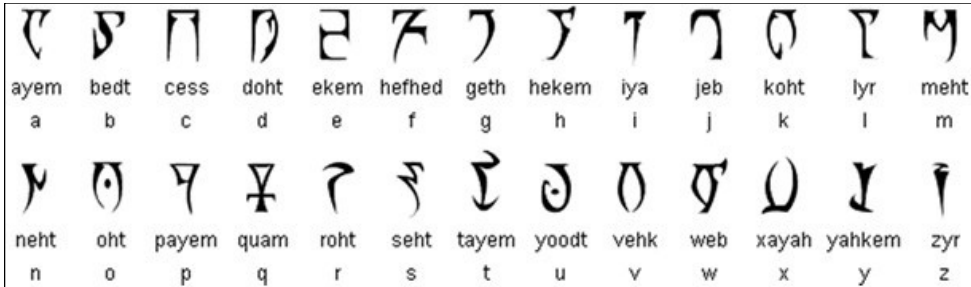
	a		b		c		d		e		f		g		h		i		j		k		l		m
	n		o		p		q		r		s		t		u		v		w		x		y		z

The Malachim alphabet

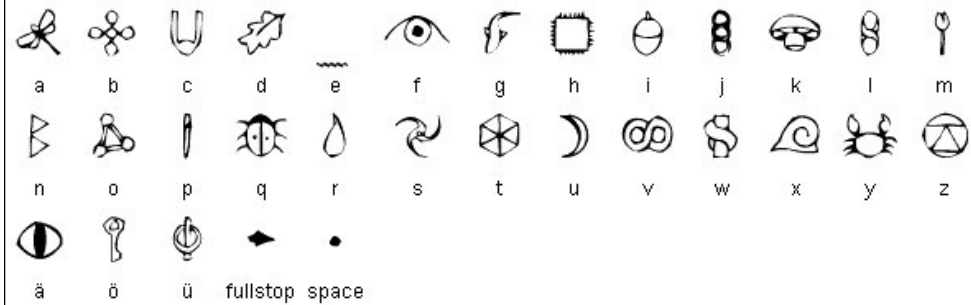
	aleph		beth		gimel		daleth		he		vau		zain		cheth		theth		yod		kaph		lamed
	mem		nun		samech		ayn		pe		tzaddi		quph		resh		shom		tau				
	m		n		s		e, o		p		x		q		r		sh		t				



Daedric



The Gnommish alphabet



Numeral	Number	Transliteration	
௦	பூஜ்ஜியம்	pūjjiyam	0
௧	ஒரு	oru	1
௨	இரண்டு	iranṭu	2
௩	மூன்று	mūṅṅu	3
௪	நான்கு	nāṅku	4
௫	ஐந்து	aintu	5
௬	ஆறு	āru	6
௭	ஏழு	ēlu	7
௮	எட்டு	eṭṭu	8
௯	ஒன்பது	Onpatu	9



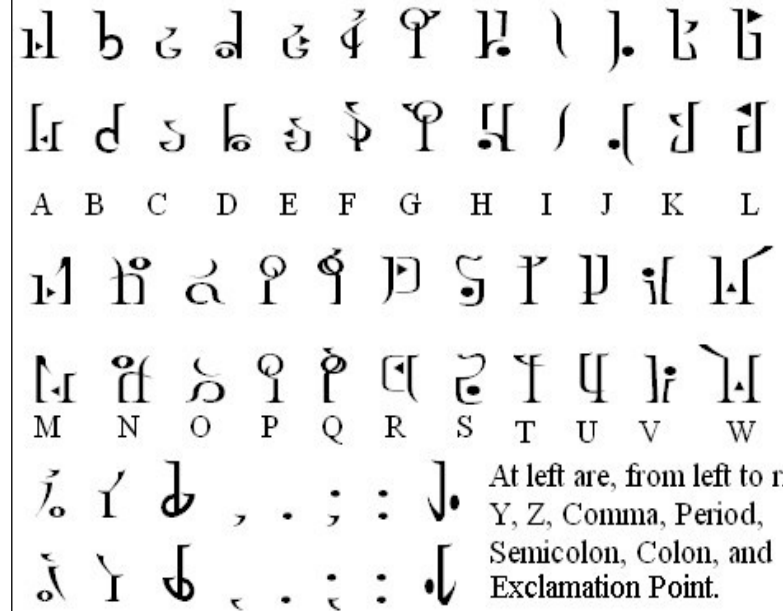
## Hebrew Alphabet

Consonant		Name		Consonant		Name	
Letter	Sofit (final)	Israeli	Ashkenazi	Letter	Sofit (final)	Israeli	Ashkenazi
א		Alef / Aleph	Alef	ל		Lamed	Lomed
ב		Bet / Beyt / Vet	Beis / Veis	מ	ם	Mem	Mem
ג		Gimel	Gimmel	נ	ן	Nun	Nun
ד		Dalet	Doles	ס		Samekh / Samech	Somech
ה		He / Hey	Hei	ע		Ayin	Ayin / Oyin
ו		Vav	Vov / Vof	פ	ף	Pe / Pey / Fe / Fey	Pei / Fei
ז		Zayin	Zayin	צ	ץ	Tsadi / Tsadie	Tsodi / Tsodik
ח		Het / Khet / Chet	Ches	ק		Qof / Kuf	Kuf
ט		Tet	Tes	ר		Resh	Reish
י		Yod	Yud	ש		Shin / Sin	Shin / Sin
כ	ך	Kaf / Khaf	Cof / Chof	ת		Tav	Tov / Tof / Sov / Sof

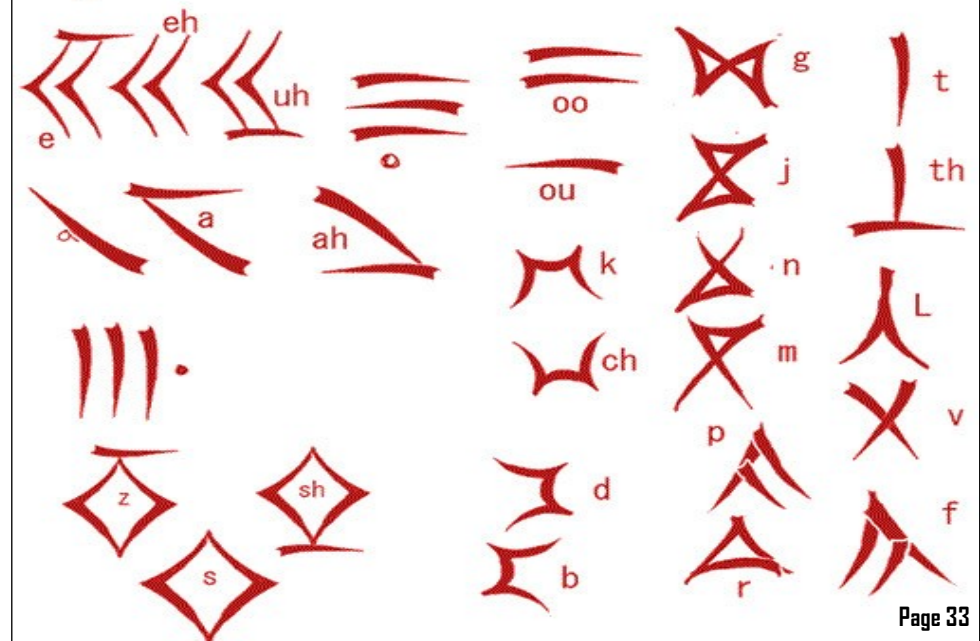
	Calculator	Morse	Hex	Octal	Html	TYNISIAN KNITTING HATS
0	0	-----	30	060	&#48	1: Gnome 10: Goblin
1	1	.----	31	061	&#49	2: Rider 11: Hunter
2	2	..---	32	062	&#50	3: Wizard 12: Gester
3	3	...--	33	063	&#51	4: Smith 13: Farmer
4	4	....-	34	064	&#52	5: Dwarfking 14: Prince
5	5	.....	35	065	&#53	6: Troll 15: Viking
6	6	-....	36	066	&#54	7: Archer 16: Rooster
7	7	--...	37	067	&#55	8: Elf1 7: Chieftain
8	8	----.	38	070	&#56	9: Elfqueen 18: Emperor
9	9	-----	39	071	&#57	

## Hylan alphabet

The top row letters are used when writing from left to right, while the bottom row are used for writing from right to left.



## Dragon Runes



Ǝ	Ɔ	Ǝ	Ǝ	Ǝ	Ǝ	Ǝ	Ǝ	Ǝ	Ǝ	Ǝ	Ǝ	Ǝ
a	b	ch	D	e	gh	H	l	j	l	m	n	ng
[a]	[b]	[tʃ]	[d]	[e]	[ɣ]	[x]	[r]	[ʃ]	[l]	[m]	[n]	[ŋ]
Ǝ	Ǝ	Ǝ	Ǝ	Ǝ	Ǝ	Ǝ	Ǝ	Ǝ	Ǝ	Ǝ	Ǝ	Ǝ
o	p	q	Q	r	S	t	tth	u	v	w	y	'
[o]	[p <sup>h</sup> -pf]	[q <sup>h</sup> ]	[q̄]	[r]	[s]	[t <sup>h</sup> ]	[t̄]	[u]	[v]	[w]	[j]	[ʔ]

► [A recording of the Klingon alphabet by Jan Jurčik](#)

### Numerals

-	Ǝ	(	Ǝ	Ǝ	Ǝ	Ǝ	Ǝ	Ǝ	Ǝ
0	1	2	3	4	5	6	7	8	9

### The Enochian alphabet

Ǝ	Ǝ	Ǝ	Ǝ	Ǝ	Ǝ	Ǝ	Ǝ	Ǝ	Ǝ	Ǝ
Pa	Veh	Ged	Gal	Or	Un	Graph	Tal	Gon	Gon with point	Na
b	c, k	g, j	d	f	a	e	m	i	w/y	h
Ǝ	Ǝ	Ǝ	Ǝ	Ǝ	Ǝ	Ǝ	Ǝ	Ǝ	Ǝ	Ǝ
Ur	Mals	Ger	Drux	Pal	Med	Don	Ceph	Van	Fam	Gisg
l	p	q	n	x	o	r	z	u/v	s	t

Numeral	Number	Transliteration	
o	ಸೊನ್ನೆ	sonnē	0
o	ಒಂದು	ondu	1
9	ಎರಡು	ēraḍu	2
೩	ಮೂರು	mūru	3
೪	ನಾಲ್ಕು	nāḷku	4
೫	ಅಯ್ಯು	aydu	5
೬	ಆರು	āru	6
೭	ಏಳು	ēḷu	7
೮	ಎಂಟು	ēṇṭu	8
೯	ಒಂಬತ್ತು	ombattu	9

## Voynich Alphabet

European Voynich Alphabet		English Equivalent	European Voynich Alphabet		English Equivalent
EVA lowercase	EVA Uppercase (where different)		EVA lowercase	EVA Uppercase (where different)	
Ǝ	Ǝ	A	Ǝ	N	
Ǝ		B	Ǝ	O	
Ǝ		C	Ǝ	P	
Ǝ		D	Ǝ	Q	
Ǝ		E	Ǝ	R	
Ǝ	Ǝ	F	Ǝ	S	
Ǝ		G	Ǝ	T	
Ǝ	Ǝ	H	Ǝ	U	
Ǝ	Ǝ	I	Ǝ	V	
Ǝ		J		W	
Ǝ	Ǝ	K	Ǝ	X	
Ǝ		L	Ǝ	Y	
Ǝ		M	Ǝ	Z	



[v]	[b]	[t]	[s]	[ʃ]	[dʒ]	[g]	[j]	[x]	[k]	[ɑ:]	[ai]	[f]
[p]	[i]	[i:]	[ɛ]	[eɪ]	[r]	[m]	[θ]	[ð]	[d]	[h]	[o:]	
[ɔ:]	[tʃ]	[w]	[u]	[u:]	[c]	[l]	[æ]	[z]	[n]			

Abaza alphabet

А а	а	ДЖВ джв	džw	КЪ къ	қ	П п	р	ХЪ хъ	қ	Ш ш	ш	т'с
Б б	б	ДЖЪ джъ	džj	КЪВ къв	қ'w	Пп	р'	ХЪВ хъв	қw	Щ щ	щ	šj
В в	в	ДЗ дз	dz	КЪЪ къъ	қ'j	Р р	р	Хъ хъ	xj	Ъ ъ	ъ	?
Г г	г	Е е	e	Кь кь	kj	С с	s	Х  х	h	Ы ы	ы	ə
ГВ гв	гв	Е̇ е̇	jo	К  к	k'	Т т	t	Х В х в	hw	Ь ь	ь	'
Гъ гъ	гъ	Ж ж	ž	К В к в	k'w	Тл тл	†	Ц ц	ts	Э э	э	e
ГъВ гъв	гъв	ЖВ жв	žw	К ь к ь	k'j	Тш тш	tš	Ц  ц	t's	Ю ю	ю	ju
Гъь гъь	гъь	Жь жь	žj	Л л	l	Т  т	t'	Ч ч	tšj	Я я	я	ja
Гь гь	гь	З з	z	Ль ль	lʒ	У у	u	ЧВ чв	tšw	И и	и	?
Г  г	г	И и	i	Л  л	l'	Ф ф	f	Ч  ч	t's			
Г В г в	г в	Й й	j	М м	m	Ф  ф	f'	Ч В ч в	t'sw			
Д д	d	К к	k	Н н	n	Х х	x	Ш ш	š			
ДЖ дж	dž	КВ кв	kw	О о	o	ХВ хв	xw	ШВ шв	šw			

Atlantean alphabet and numerals

a	b	c	d	e	f	g	h	i	j	k	l	m
n	o	p	q	r	s	t	u	v	w	x	y	z
ch	sh	th	0	1	2	3	4	5	6	7	8	9

**EXPLANATION OF ALPHABET**  
 THE LONG STROKES REPRESENT POINTING THE NEEDLE TO THE RIGHT, THE SHORT STROKES TO THE LEFT; THUS A ✓ IS MADE BY POINTING THE NEEDLE ONCE LEFT AND ONCE RIGHT; C / \ / IS MADE RIGHT, LEFT, RIGHT, LEFT; F \ / \ / LEFT, LEFT, RIGHT, LEFT; Y / \ / \ / RIGHT, LEFT, RIGHT, RIGHT

Single Needle Telegraph Alphabet.

International Code of Signals U.S. Navy

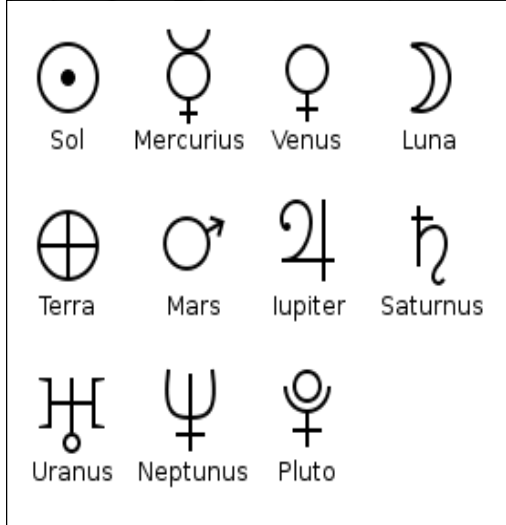
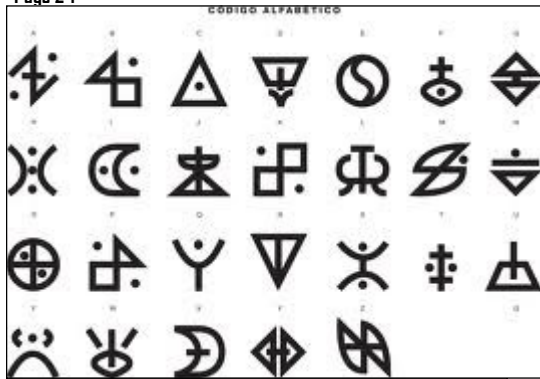
A	B	C	D	E	F	G	H	I	J	K	L	M	N	O	P	Q	1	2	3	4	5	6	7	8	9	0	1	2	3	4	5	6	7	8	9	0	SQ	FL	SU	DI	SF	ST	TU	CO	FO		CA	PR	IN	NE	EM	PO	SB
---	---	---	---	---	---	---	---	---	---	---	---	---	---	---	---	---	---	---	---	---	---	---	---	---	---	---	---	---	---	---	---	---	---	---	---	---	----	----	----	----	----	----	----	----	----	--	----	----	----	----	----	----	----

**Chinese Alphabet?**

There is no such thing as a Chinese alphabet. But, just for fun, we have selected authentic Chinese characters that look something like the letters of the English alphabet. You can use these "letters" to write an code... and no one but you and others with the code can read your secrets!

月	官	匹	册	内	口
户	己	尺	弓	七	白
力	三	下	人	山	父
巨	升	工	了	乙	
丁	水	心			

A	B	C	D	E	F
G	H	I	J	K	L
M	N	O	P	Q	R
S	T	U	V	W	X
Y	Z	AND	THE	!	?
:	.	.	.	<	>
.	.	..	.	<	>



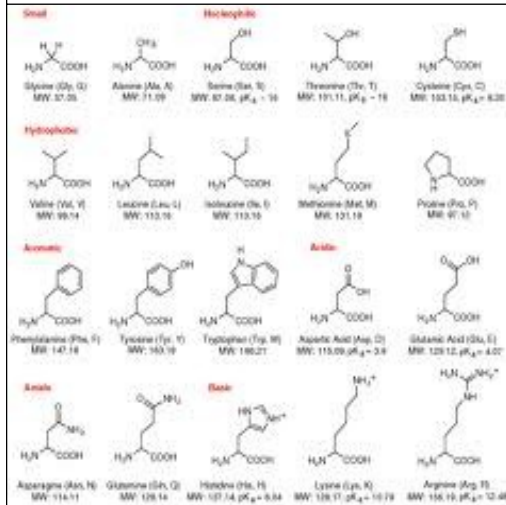
**TABLE I  
ATBASH CIPHER**

Plain	Cipher	Plain	Cipher
A	Z	N	M
B	Y	O	L
C	X	P	K
D	W	Q	J
E	V	R	I
F	U	S	H
G	T	T	G
H	S	U	F
I	R	V	E
J	Q	W	D
K	P	X	C
L	O	Y	B
M	N	Z	A

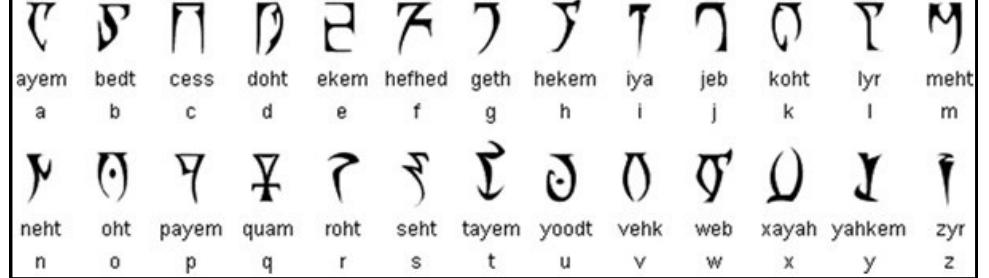
**Aquaria Alphabet**

A	ʎ	N	o
B	U	O	ʎ
C	l	P	3
D	φ	Q	⊙
E	9	R	⊙
F	J	S	ρ
G	P	T	9
H	b	U	l
I	C	V	ρ
J	O	W	S
K	P	X	ρ
L	σ	Y	s
M	∩	Z	

• or ∨ = word break  
Q,Z = unknown

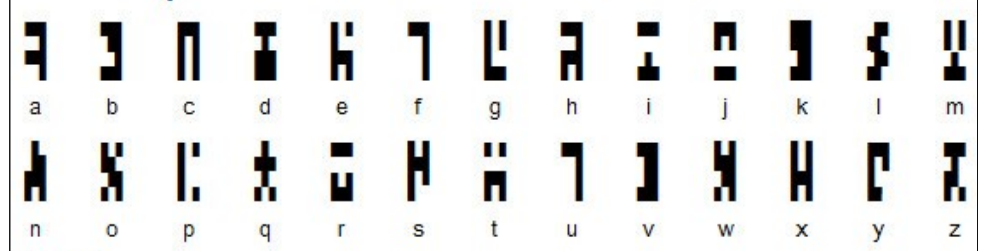


# Daedric

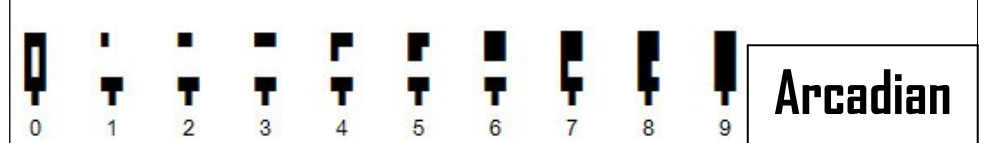


	Gaulish	Breton (Brezhoneg)	Cornish (Kernewek)	Welsh (Cymraeg)	Irish Gaelic (Gaeilge)	Manx Gaelic (Gaelg)	Scottish Gaelic (Gàidhlig)
0		mann	man	sero/dim	náid	neunhee	neoini
1	oino	unan	onan, onen unn (before noun)	un	aon	nane un, unname	aon
2	do	daou (m) div (f)	dew (m) diw (f)	dau (m) dwy (f)	dó	jees daa	dà/dhà
3	tri	tri (m) teir (f)	tri (m) teyr (f)	tri (m) tair (f)	trí	tree	tri
4	petor	pevar (m) peder (f)	peswar (m) peder (f)	pedwar (m) pedair (f)	ceathair	kiare	ceithir
5	pempe	pemp	pypm	pum(p)	cúig	queig	còig
6	suekos	c'hwec'h	hwegh	chwe(ch)	sé	shey	sia
7	sextam	seizh	seyth	saith	seacht	shiaght	seachd
8	oxtu	eizh	eth	wyth	ocht	hoght	ochd
9	nau	nav	naw	naw	naoi	nuy	naoi

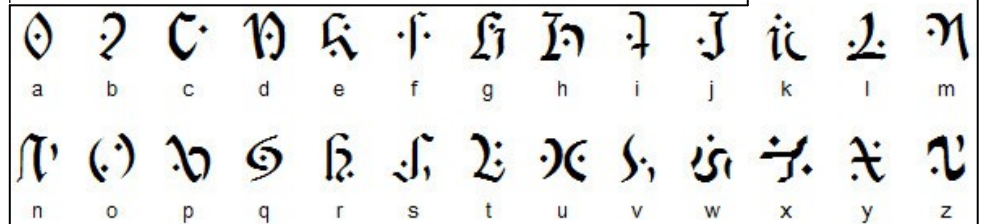
## Ancients alphabet



### Numerals



## Arcadian





# Aurek Besh

aurek	besh	cresh	dora	esk	forn	grek	herf	isk	jenth	krill	leth
a	b	c	d	e	f	g	h	i	j	k	l
mern	nern	osk	peth	qek	resh	senth	trill	usk	vev	wesk	
m	n	o	p	q	r	s	t	u	v	w	
xesh	yirt	zerek	cherk	enth	onith	krenth	nen	orenth	shen	thesh	
x	y	z	ch	ae	eo	kh	ng	oo	sh	th	
,	.	?	!	:	;	-	"	'	(	)	/
0	1	2	3	4	5	6	7	8	9		

## Cirth

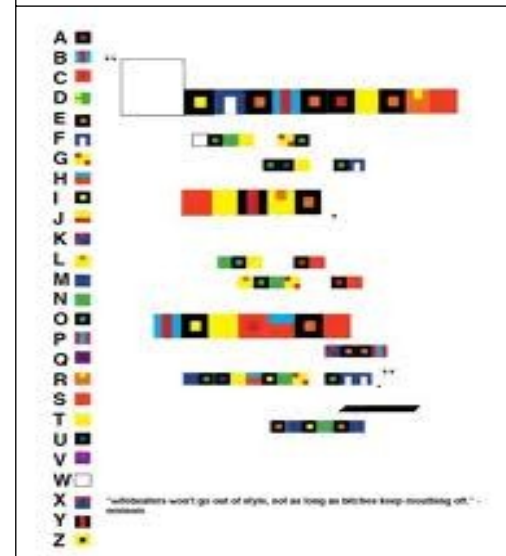
p	b	f	v	hw	m	mb	t	d	th	dh	r
ch	ks	j	sh	zh	k	g	kh	gh	n	kw	gw
khw	ghw	ngw	nw	g	gh	l	-	nd	s	s	nj
ng	ou/ow	i	y	hy	u	z	w	ü	e	ee	a
aa	o	oo	ô	n	h	e	u	ps	ts	-h	&

## The Angelic alphabet

thes	cheth	zain	vau	he	daleth	gimel	beth	aleph	zade	pe
ain	sameth	nun	mem	lamed	caph	iod	tau	schin	res	kuff

### Fluxus Indian String Khipu for English Alphabet

a	b	c	d	e	f	g	h	i	j	k	l	m
n	o	p	q	r	s	t	u	v	w	x	y	z



Sol	Mercurius	Venus	Luna	Uranus	Pluto
Terra	Mars	Iupiter	Saturnus	Neptunus	

Page 25


### THE HIEROGLYPHIC TRANSLITERATION

A	B	C	D	E	F
G	H	I	J	K	L
M	N	O	P	Q	R
S	T	U	V	W	X
Y	Z	CH	KH	SH	TK
<b>NUMBERS</b>					
1	2	3	4	5	6
7	8	9	10	100	1000

